



TIMBER FRAMES, FLOOR JOISE, AND ROOF TRUSSES BUILDING INDUSTRY

Hungary, Szekszard



Web: www.fa-lak.hu

Services:

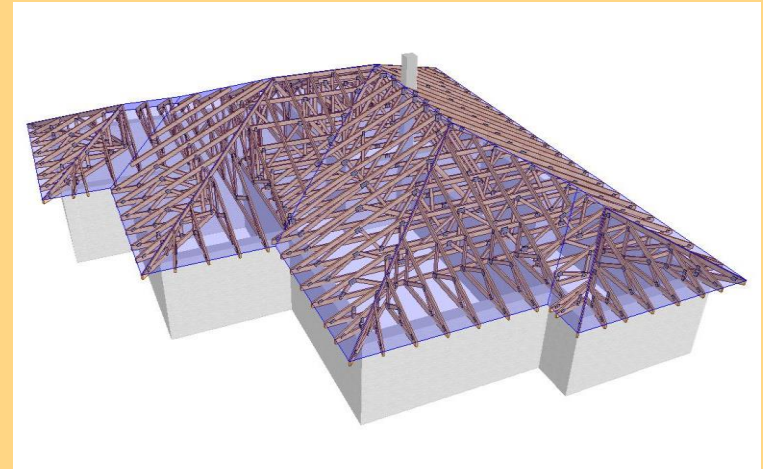
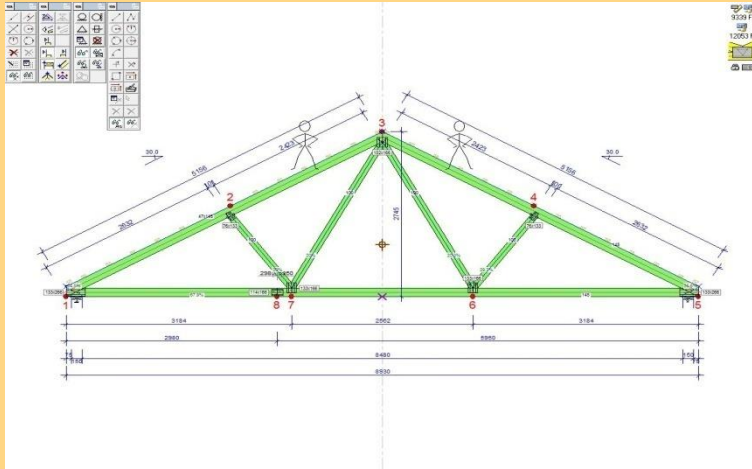
- Engineering, production, and installing floor joise system
- Engineering, production, and installing roof trusses system
- Timber frame houses building
- Mobil home production



www.mobil-houses.com

Floor joise, roof trusses

Engineering, production, and building



Floor joises

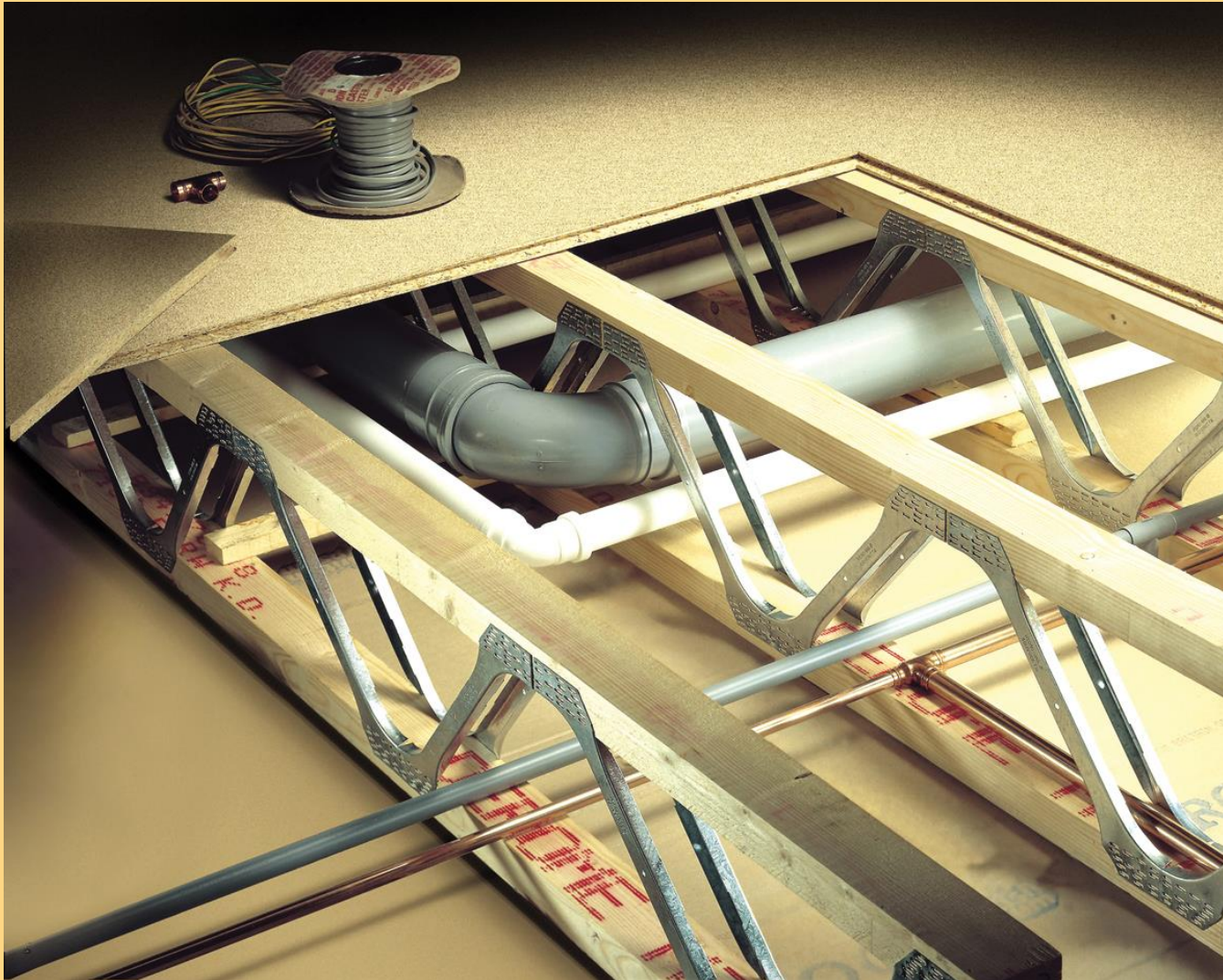


No limit in distance



Professional floor system

Dry building technologie, save time



Economy, light, but strong

Very light, so very easy transport, fast and easy installation of joise. Strong, and material saving.



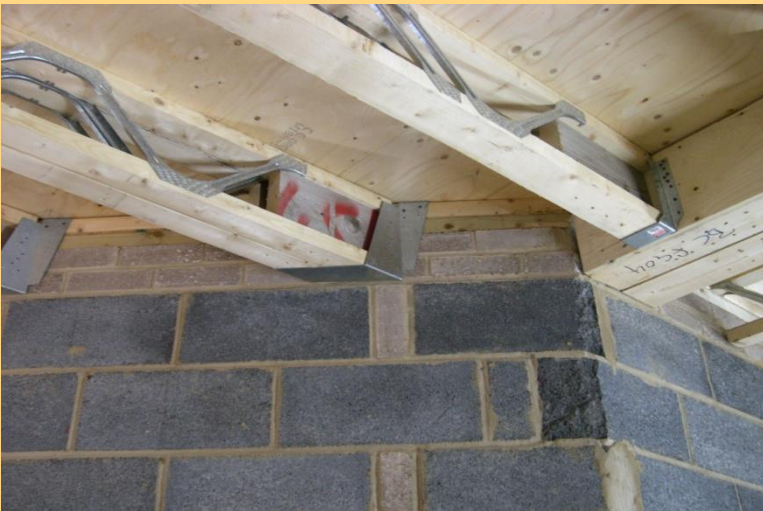
Use to all building



Timber frame houses



Passive houses



Brick, and concrete houses

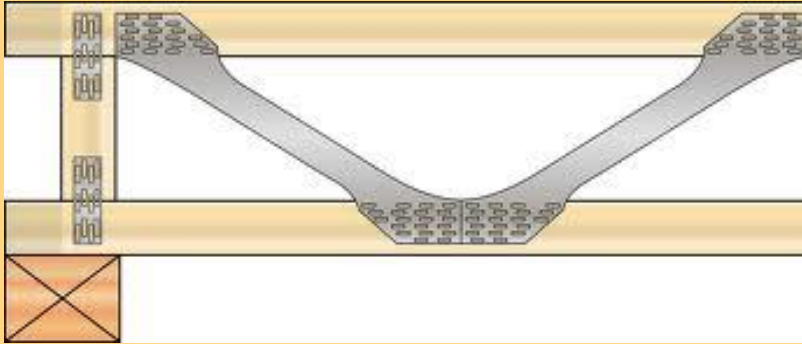


Roof and joist together

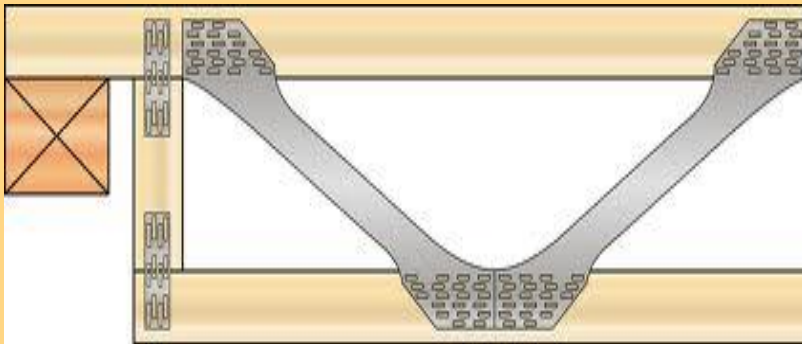
Easy installation for pipes, and ele



Position for joise



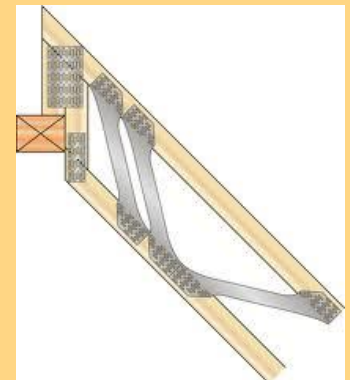
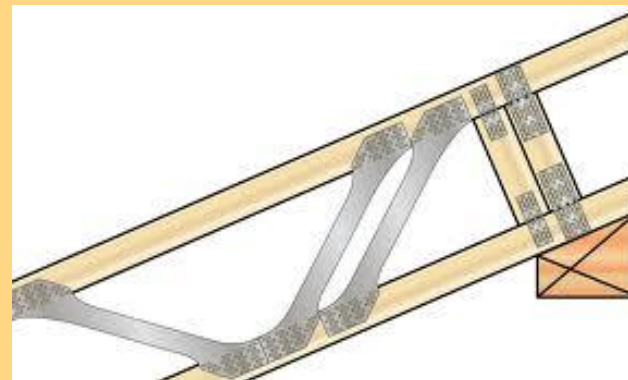
On the wall



Lowered floor

Masonry hanger floor

Roof trusses



Floor system

Posi trusses on the wall



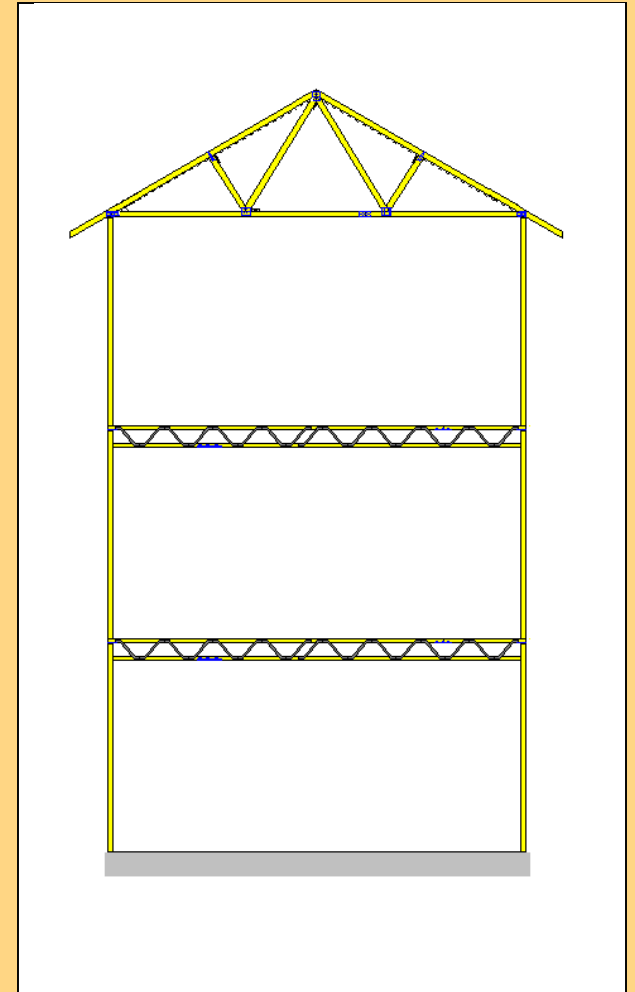
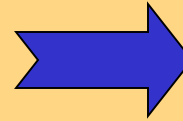
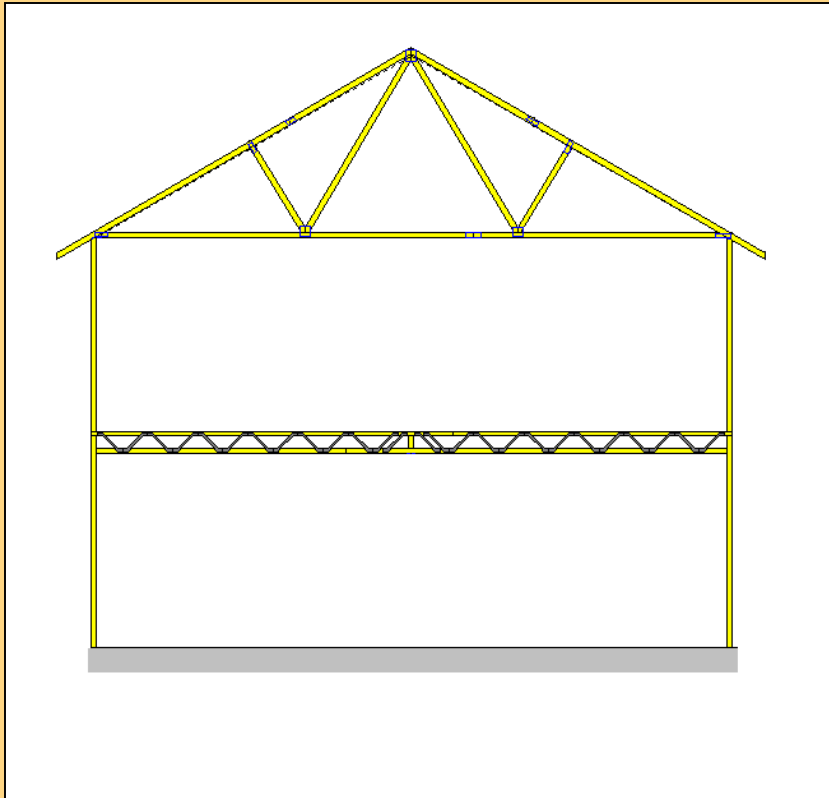
Floor system

Lowered floor



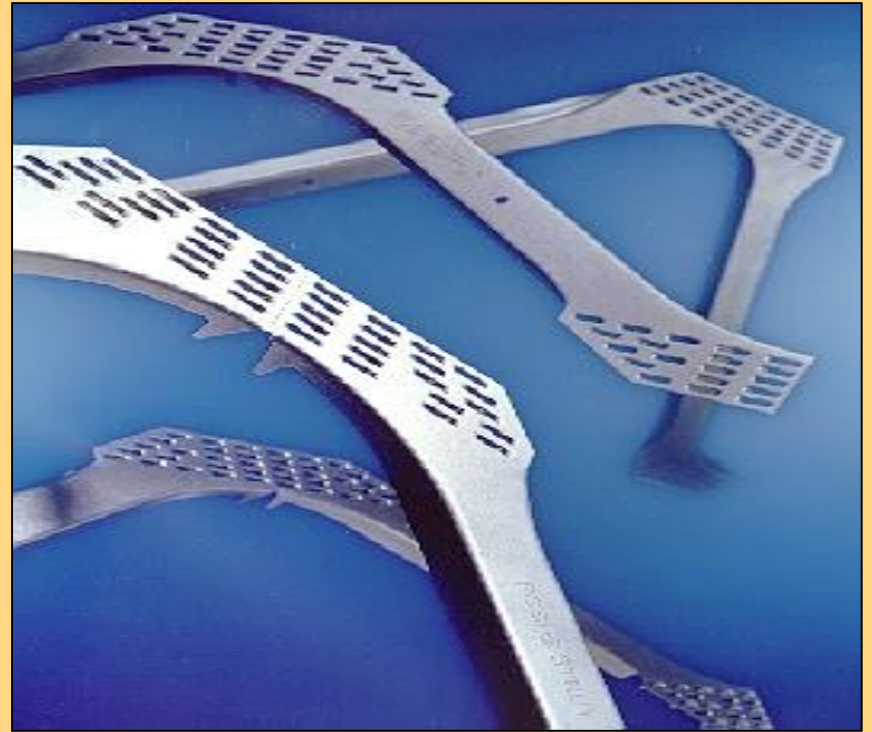
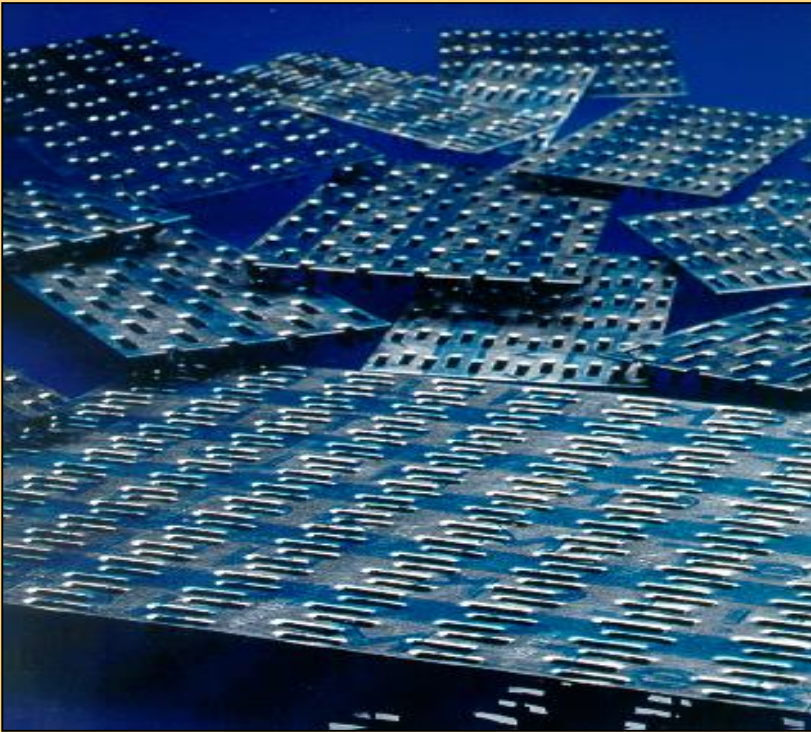
Using:

- Ground floor
- Intermediate floor
- Separating floor



Quality No.1

We use engineered and certified product to production.



Joise dimensions

Joise type	Joise wide	Joise hight	Joise centres maximum	Joise Long
	mm	mm	mm	mm
PJ400	90	250	400-625	4300
PJ450	90	300	400-625	4800
PJ500	140	250	400-625	5300
PJ550	140	300	400-625	5800
PJ600	140	325	400-625	6300
PJ650	140	325	400-625	6800

Joise dimensoins

Joise type	Joise wide	Joise hight	Joise centres maximum	Joise long
	mm	mm	mm	mm
PJ700	90	350	400-625	7300
PJ750	90	420	400-625	7800
PJ800	140	420	400-500	8300
PJ850	140	465	400-500	8800

Constant load:

Top side: 1 kN/m²

Lower side: 0,5 kN/m²

Payload:

Top side: 2 kN/ m²

You must follow the table of joise centres.

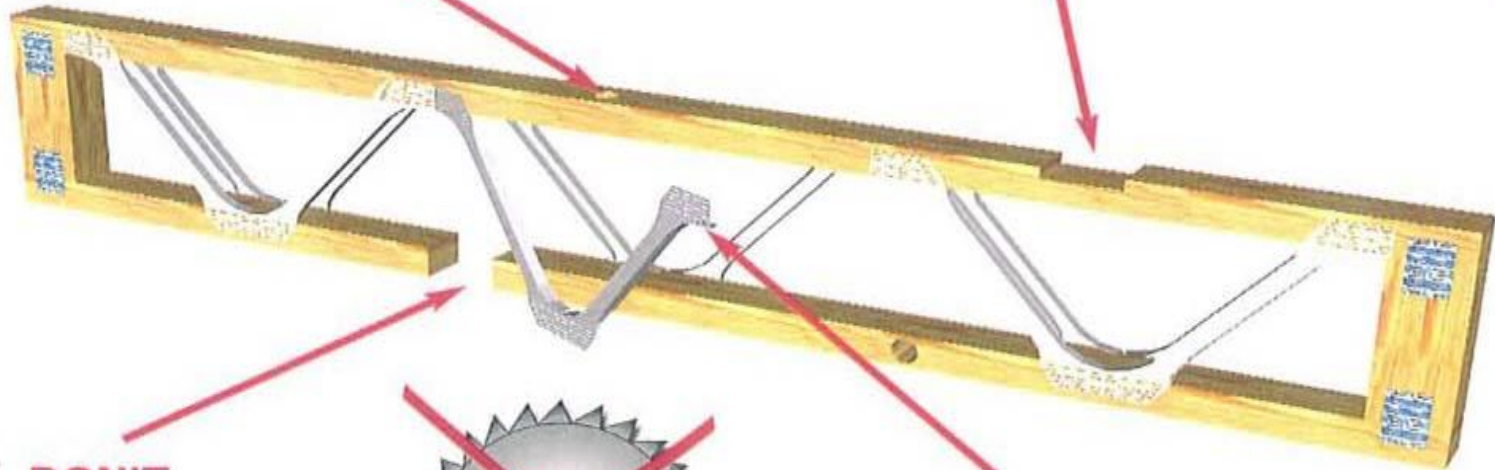
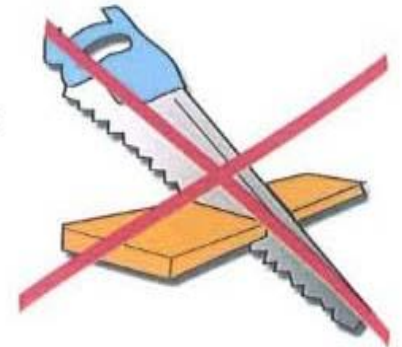
If you have biggest payload on the joist, or biggest joise centres, must you contact with production company!

Dont do it!

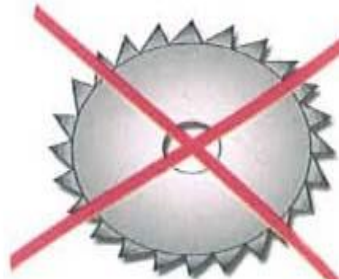
✗ DON'T
Drill holes in the
timber chords



✗ DON'T
Cut notches
in the timber

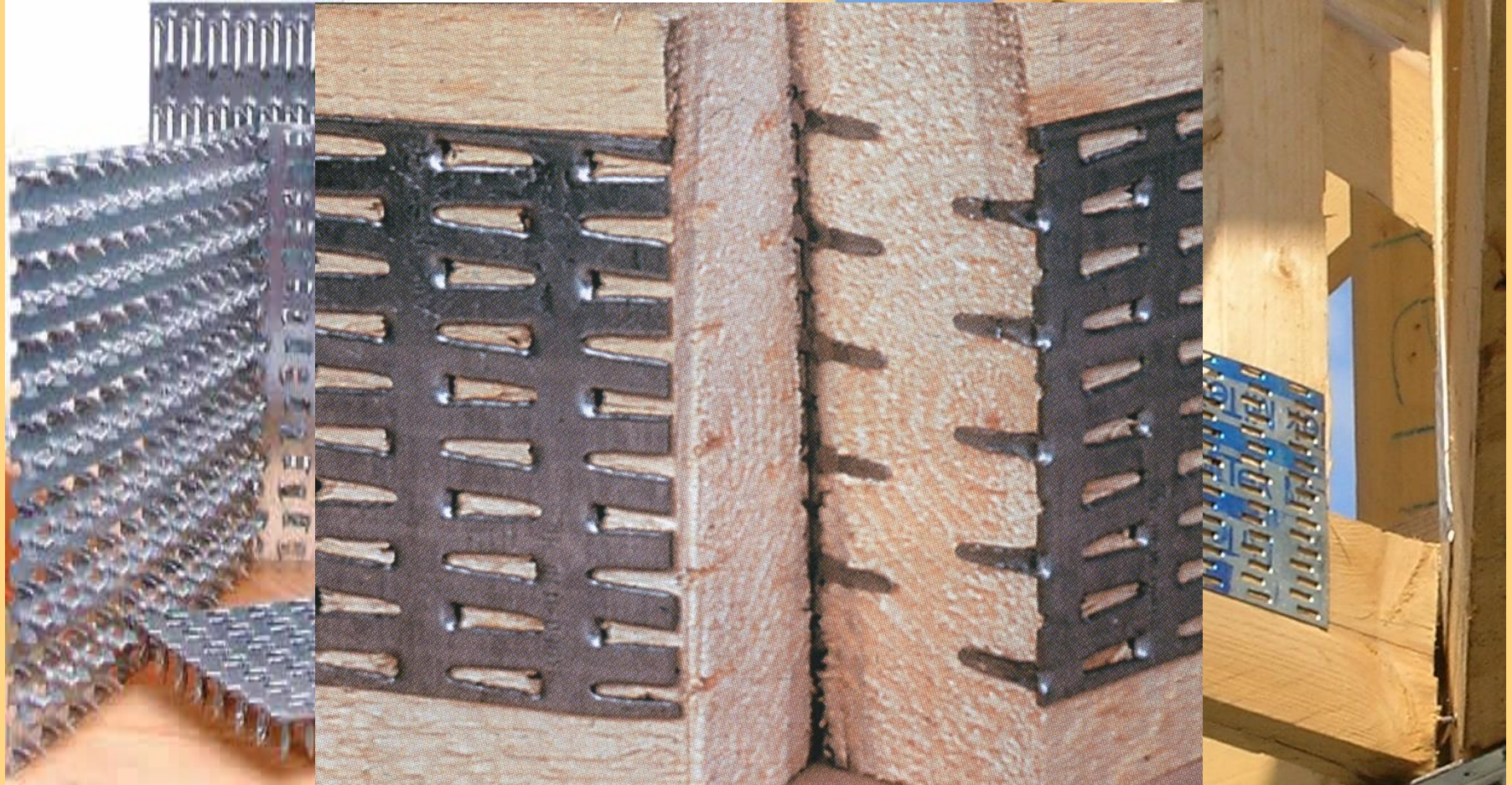


✗ DON'T
Cut through the
timber chords



✗ DON'T
Cut or remove
the metal webs

Connector plate



The MiTek connector plate is made from special corrugated steel, produced on modern stamp presses, using special tools and dies. It is plate can be perfect connection in the timber.

Web: www.fa-lak.hu

Contact us:

Telefon: +36 70 2 772 472

E-mail: fahaz@t-email.hu



Quvalification

